



Technology by Apptec

A revolution in file management and playing!



DigiScribe QUICK START GUIDE

Version 22.01.02

Welcome to DigiScribe. A powerful way to manage your dictation workload and play common types of dictation files including WAV, MP3, DSS, and WMA. Simply point DigiScribe's "Pool" paths to where the dictation files are, and set DigiScribe's "Filters" to look at those paths, and you're ready to transcribe.

On the enclosed CD you will find an installation program called "DigiScribe Full Installation xxyzz.exe" (where xxyzz is the version, read as xx.yy.zz) and a product manual called "DigiScribe Manual.pdf".

Refer to the DigiScribe Manual for detailed information about installation, setup and use. If there is a newer version of the manual at "www.DigiTelSoftware.com" than the one on the Installation CD, **refer to the newer version.** If you need the free Adobe Reader program to open the manual, a link to it is available at "www.DigiTelSoftware.com".

Installation & Setup:

1. If "www.DigiTelSoftware.com" has a newer version of the "Full Installation" program than the Installation CD, **use the newer version.**
2. Run the "Full Installation" program and follow its on-screen instructions (**setup in default directory only, and answer "Yes" each time asked "do you want to keep this file?"**).
3. DigiScribe can be set to receive and display files from various sources of dictation. This includes DigiTel WAV files, as well as other WAV files, MP3, DSS, and WMA files. **Please see the detailed instruction on the other side of this guide →**

License Key:

1. To receive your DigiScribe License Key via email, please email the "**Pop Number**" (found on the DigiScribe installation CD or provided to you by your DigiScribe reseller) **and** the "**Lock Number**" found in DigiScribe's File/Registration menu to Info@DigiTelSoftware.com .

Technical Support:

If you need technical support, please contact the place of purchase. Thank you.

Apptec Corporation
A developer of next generation technology!



Technology by Apptec

A revolution in file management and playing!

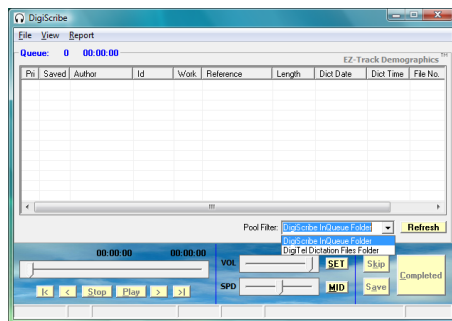
Receiving and Displaying Files from Various Sources of Dictation

DigiScribe has many customizable ways in which it can be set to receive and display a variety of file types from a variety of sources.

DigiScribe also has some common default configurations already set up as described below. Please refer to DigiScribe's manual for more information about the many customizable ways in which it can be set to receive and display various files from various sources of dictation. You may also email Info@DigiTelSoftware.com with any questions that you may have.

1. Seeing DigiTel Files on DigiScribe on the same PC:

DigiTel places its dictation files into "c:\Apptec\DigiTel\Dictation Files" by default, and DigiScribe has its "Pool Path 2" path set to look for files there, by default. (See its Configuration menu's "Paths" tab.) DigiScribe has its "DigiTel Dictation Files Folder" Pool Filter set to display the files found at the "Pool Path 2" path.



Therefore to see the local DigiTel files on a DigiScribe installed on the same pc as DigiTel,

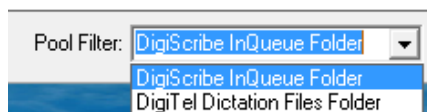


set DigiScribe's Pool Filter drop-down box to the default Pool Filter labeled "DigiTel Dictation Files Folder".

2. Seeing DSS Files on DigiScribe:

If you are receiving DSS files from a portable recorder, you must place them into "c:\Apptec\DigiScribe\Files\ImportQueue". In DigiScribe's Configuration Menu's Settings Tab, enable the Automatic Import option. Then to import those DSS file click Refresh and those files will be converted to WAV files and moved into DigiScribe's "Pool Path 1" path which is set to "c:\Apptec\DigiScribe\Files\InQueue" by default. (See its Configuration menu's "Paths" tab.) DigiScribe has its "DigiScribe InQueue Folder" Pool Filter set to display the files found at "Pool Path 1" path.

Therefore to see the converted DSS files on DigiScribe,



set DigiScribe's Pool Filter drop-down box to the default Pool Filter labeled "DigiScribe InQueue Folder".

3. Receiving DigiTel Files into DigiScribe from an FTP Site:

DigiTel files downloaded from an FTP site using DigiScribe's "View FTP Menu" are placed into its "Pool Path 1" path which is set to "c:\Apptec\DigiScribe\Files\InQueue" by default. Therefore to see the DigiTel files downloaded from an FTP site into DigiScribe, simply set DigiScribe's Pool Filter drop-down box to the default Pool Filter labeled "DigiScribe InQueue Folder" as shown above.

Apptec Corporation

A developer of next generation technology!