



**PedalMagic™**

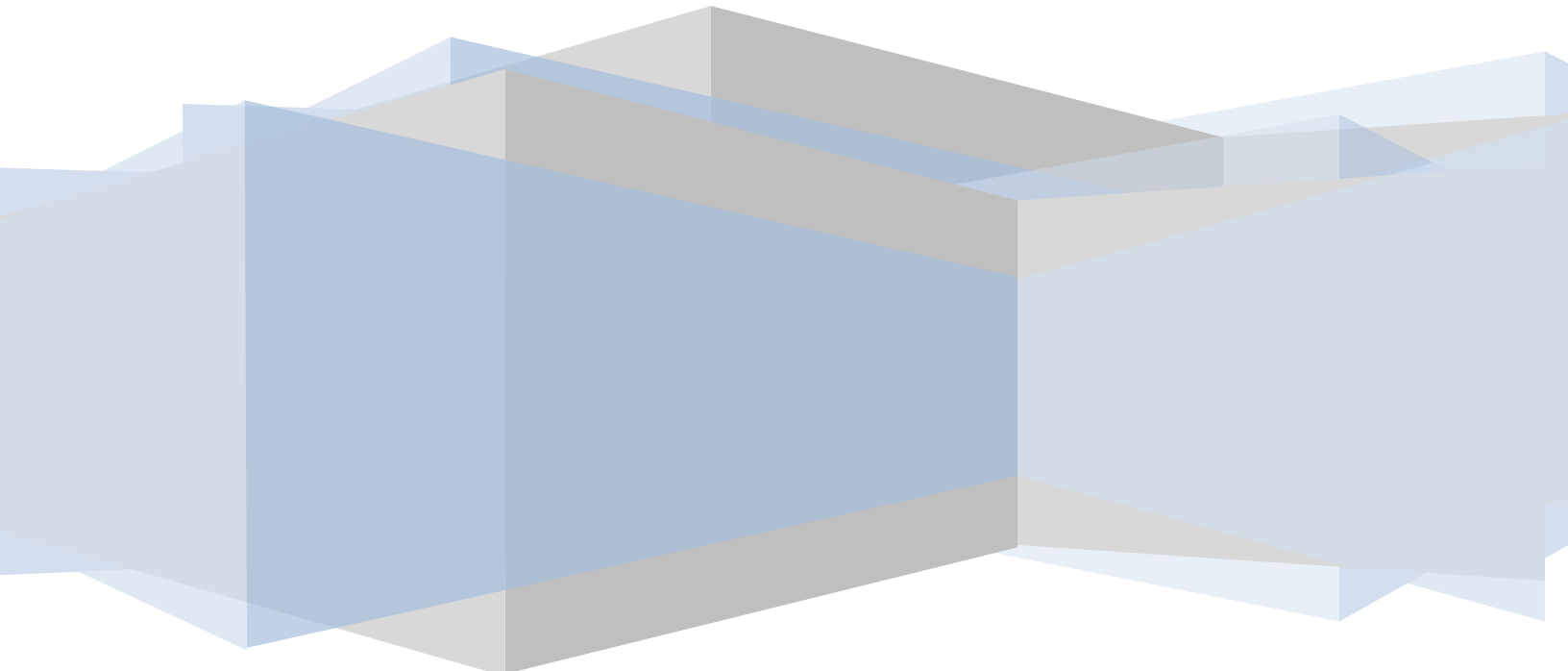
Technology by Apptec

Foot Pedal to Hot-Key  
Application Controller

---

# **PedalMagic Manual**

**Installation, setup and use.**  
**Apptec Corporation**



**Apptec Corporation**

***Our products and solutions make your work easier!***



**COPYRIGHT**

© Copyright 2005-2011  
Apptec Corporation  
All Rights Reserved

No part of this publication may be reproduced, stored in a retrieval system, or transmitted in any form or by any means, electronic, mechanical, photocopying, recording, or otherwise, without the prior written consent of Apptec Corporation.

**Trademarks**



is a trademark or registered trademark of Apptec Corporation.

All other trademarks or registered trademarks are the property of their respective companies.

**Changes**

Apptec Corporation reserves the right to make changes to its products and specifications at any time. Information furnished by Apptec Corporation is believed to be accurate, but no responsibility is assumed by Apptec Corporation for any result from the use of said information.

**License Terms And Conditions**

PedalMagic software is licensed to you under the terms and conditions contained in the END USER LICENSE AGREEMENT located in the program's \License directory. PLEASE READ THIS LICENSE CAREFULLY BEFORE USING THIS SOFTWARE. BY USING THIS SOFTWARE YOU ARE AGREEING TO BE BOUND BY THE TERMS OF THIS LICENSE.

**Apptec Corporation**  
*Our products and solutions make your work easier!*

## TABLE OF CONTENTS

- 4 INTRODUCTION
- 5 INSTALLATION
  - PC Requirements
  - Software Installation
  - Hardware Installation - Foot Pedal
- 6-7 TOOLBOX
  - Hot-Key Settings
  - Pedal Type
  - Typical Applications
- 8 REGISTRATION  
SOFTWARE UPDATES
- 9 LICENSE AGREEMENT  
LIMITED WARRANTY

## INTRODUCTION

PedalMagic lets you add Foot Pedal Control to program that can use Hot-Key (keystrokes) to activate its functions. It works with the Infinity IN-USB2 or IN-USB1 USB Foot Pedal or the Infinity IN-DB9 Serial Foot Pedal. PedalMagic sends 'Hot-Key' keystroke sequences to any application program that can activate its functions via Hot-Keys.

PedalMagic runs in the background and sends your application the keystrokes it needs as each Pedal is Pressed and Released... the keystrokes are sent just as if you typed them from your keyboard... *just like Magic!*

The menu functions of most application programs can be activated by pressing the "Alt" key on the keyboard plus a letter key or a function key such as F1. A menu function which can be activated in this way is usually denoted by an underscore under one character of its name. For example the menu selection for "File" can be activated by pressing "Alt" plus "F".

Application programs may also allow certain functions to be activated by pressing a combination of 'Hot-Keys'. These applications usually contain a Menu from which to configure the combination of keys that activate a particular function. For example an audio playing application may use the keystroke combination of "Ctrl" plus "Alt" plus "F1" to begin playing a file.

PedalMagic allows you to instantly recall up to Five Pedal Definitions to save you time and effort when using it with your favorite applications. For example, you can use PedalMagic to control your favorite audio player's Play/Pause, Rewind and F.Forward functions, or you can use it to Spell Check, Save As, or Print from your favorite Word Processor... *the possibilities are endless!*

PedalMagic runs minimized and automatically remembers the last application settings that you choose it to work with. To use it... simply run it and then run your favorite application.

To switch it to work with a different application, simply click PedalMagic on the Task Bar and then choose a different Application setting.

**Note: Your application program must be "In Focus" (in other words in the foreground) to receive keystroke sequences from PedalMagic.**

works great with...

 and 

and  and 



Court Transcription Application  
set Center Pedal Pressed (Play) to Alt F1  
set Center Pedal Released (Pause) to Alt F3

Inscribe Application  
set Center Pedal Pressed (Play) to Shift Ctrl X  
set Left Pdal Pressed (Rewind) to Shift Ctrl C  
set Right Pedal Pressed (F.Fwd) to Shift Ctrl V  
set all Pedals Released (Pause) to Shift Ctrl Q  
and in the Inscribe Application's Options menu set "Seperate Play, Pause"  
and in the Options menu set "USB Pedal, Don't play after Rwd/Fwd".

**Any application that can respond to Key Presses can be Pedal controlled!**

**Apptec Corporation**  
*Our products and solutions make your work easier!*

## INSTALLATION

### PC Requirements

USB Port: One for an Infinity model IN-USB2 or IN-USB1 USB Foot Pedal or for a model IN-DB9 Serial Foot Pedal when used with a Serial-To-USB-Converter.

Serial Port: One if using an Infinity IN-DB9 Serial Foot pedal directly connected to your pc's serial port.

Hard Disk: 3 MB for the PedalMagic program

### Operating Systems

WINDOWS 2000, 2000/2008 Server, XP, VISTA, WINDOWS 7

---

### SOFTWARE INSTALLATION

1. **LOG-IN** to Windows as a user with **Administrator Rights** if necessary.
2. **DOWNLOAD** the latest PedalMagic at [www.DigiTelSoftware.com](http://www.DigiTelSoftware.com) by clicking on **SOFTWARE** then **New Installation**. Then click on the version number under the PedalMagic heading and follow the on-screen instructions. (Only setup in the default directory, and if asked "do you want to keep this file" click Yes).

PedalMagic will run for a 30-day Evaluation Period prior to a License Key being entered.

To place a PedalMagic **Shortcut** onto your desktop, locate PedalMagic in All Programs, then right-click on PedalMagic and select **Send To - Desktop**.

### HARDWARE INSTALLATION

1. Connect the IN-USB2 or IN-USB1 USB Foot Pedal to a USB port and wait one minute for Windows Found New Hardware wizard to automatically install its driver.
2. **Or** if using an IN-DB9 Serial Foot Pedal and your pc has a serial port, connect it to a serial port.
3. **Or** if using an IN-DB9 Serial Foot Pedal and a Serial-To-USB-Converter, install the Serial-To-USB-Converter's Driver (from its mini-CD or from Pedal Magic's CD) and then connect the IN-DB9 Foot Pedal to the Converter and the Converter to a USB port.

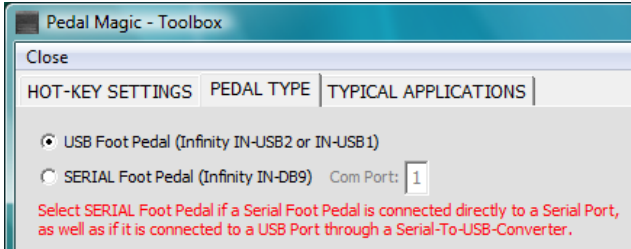
**Note:** If the Pedal is disconnected from a USB port and then reconnected while PedalMagic is running, exit and then re-run PedalMagic so it may initialize the Pedal.

**Note:** If using a Serial Foot Pedal and Serial-To-USB-Converter, set PedalMagic's Pedal Type (in its Toolbox) to Serial Foot Pedal.

## TOOLBOX

Click **Toolbox** then select the type of Pedal you are using.

### PEDAL TYPE



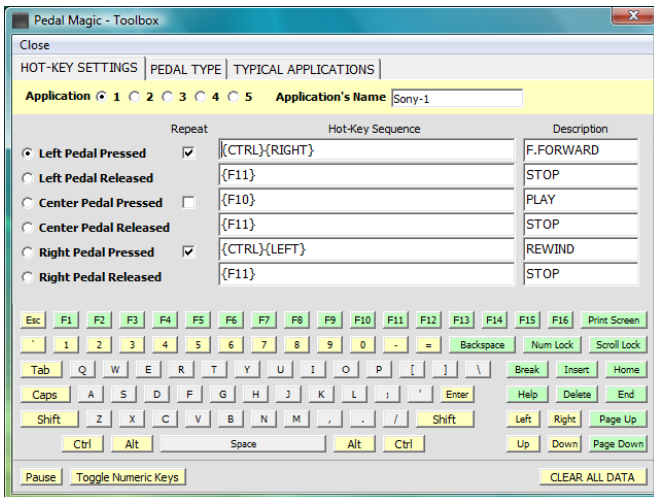
Select **USB Foot Pedal** if you are using an IN-USB2 or IN-USB1 USB Pedal.

Select **SERIAL Foot Pedal** if you are using an IN-DB9 Serial Pedal, and enter the **Com Port** that it is connected to.

**Note:** Select SERIAL Foot Pedal if you are using an IN-DB9 Serial Foot Pedal with a Serial-To-USB-Converter.

### HOT-KEY SETTINGS

Application 1 thru 5 chooses which memory to enter data in to.



**Application's Name** shows on the main menu.

Enter the desired **Hot-Key Sequence** for each Pedal via the Keyboard Image Keys. And enter a **Description** for each sequence.

Check **Repeat** for a Hot-Key sequence that you want to automatically repeat while a Pedal is pressed and held.

**Note:** Certain keys will be surrounded by brackets {} automatically... **do not remove those brackets.**

Click **Pause** to enter a one-second pause into a Hot-Key Sequence.

Click **Toggle Numeric Keys** to toggle A-Z to a-z as well as to toggle the numeric dual function keys 0-9 to display their alternate characters.

A Hot-Key Sequence can be cleared by double-clicking it.

**CLEAR ALL DATA** at the lower righthand side of the Keyboard Image will clear all the Application's data.

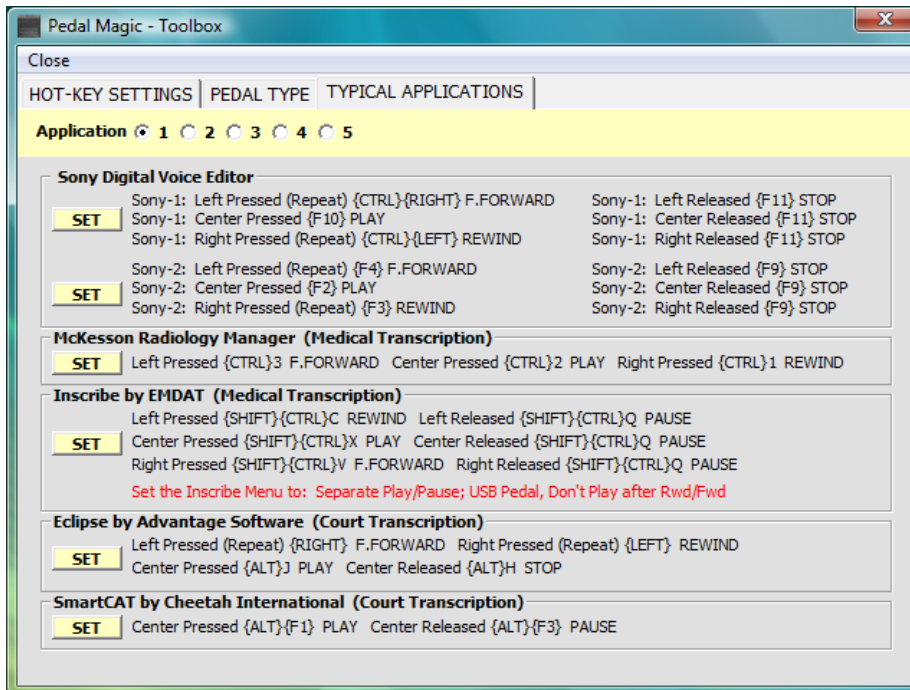
## TOOLBOX

### TYPICAL APPLICATIONS

Hot-Key Settings for Typical Applications can be set by clicking **SET** for the desired application.

If your desired application is not listed in this menu, you may set the Hot-Key Settings for each Pedal Press and Release manually in the Hot-Key Settings menu.

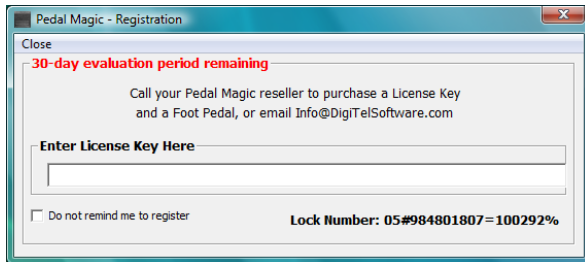
Application 1 thru 5 chooses which memory to enter data in to.



## REGISTRATION

PedalMagic will run for a 30-day evaluation prior to a License Key being entered into its Registration menu. Simply **Close** this window to begin using it.

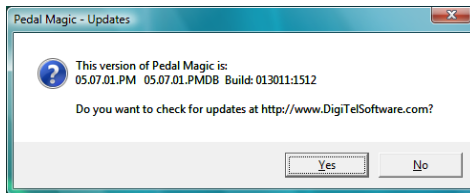
A License Key is available for purchase from your PedalMagic reseller or contact [Keys@DigiTelSoftware.com](mailto:Keys@DigiTelSoftware.com) for more information.



Once you've purchased a PedalMagic License Key, email the **Lock Number** from its Registration menu along with the **POP (Proof-Of-Purchase) Number** (that you will receive after your purchase) to [Keys@DigiTelSoftware.com](mailto:Keys@DigiTelSoftware.com) and you will receive your **License Key via email**.

## SOFTWARE UPDATES

Click File, Check for Updates to check for Software Updates, new Full Installation Packages, and new User Manuals at [www.DigiTelSoftware.com](http://www.DigiTelSoftware.com)



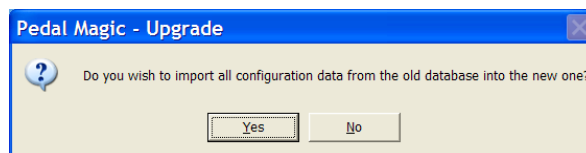
Select **Software** for Software Updates and for new Full Installation Packages. Select **Documentation** to see the latest Documentation.



On this site, you can also sign-up for Update Notices to receive an email when a new upgrade becomes available.

If you want to upgrade to a new version but wish to keep the previous settings, before you install the newer version, copy the current database file PedalMagic.mdb from c:\Apptec\PedalMagic\ into c:\Apptec\PedalMagic\PlaceOldDatabaseHere

Then install the new version. The next time you start PedalMagic click "Yes" to the following question:



**Apptec Corporation**  
*Our products and solutions make your work easier!*





## LICENSE AGREEMENT

PedalMagic SOFTWARE is licensed to you under the terms and conditions contained in the END-USER SOFTWARE LICENSE AGREEMENT file called "License.rtf" located in this program's \License directory. PLEASE READ THIS LICENSE CAREFULLY BEFORE USING THIS SOFTWARE. BY USING THIS SOFTWARE YOU ARE AGREEING TO BE BOUND BY THE TERMS OF THIS LICENSE.

## LIMITED WARRANTY

**Software:** Please see the End-User Software License Agreement and Limited Warranty Coverage agreement located in the product's /License directory or on the installation CD.

**Apptec Corporation**  
*Our products and solutions make your work easier!*