

Using the Foot Control Wizard

The Foot Control Wizard helps you map events for your foot control. For more information about using a foot control, refer to the "[Using a Foot Control](#)" section of this document.

You can run this wizard at any time by selecting "**View – Options – Foot Control**" and clicking on the "Foot Control Wizard" button.

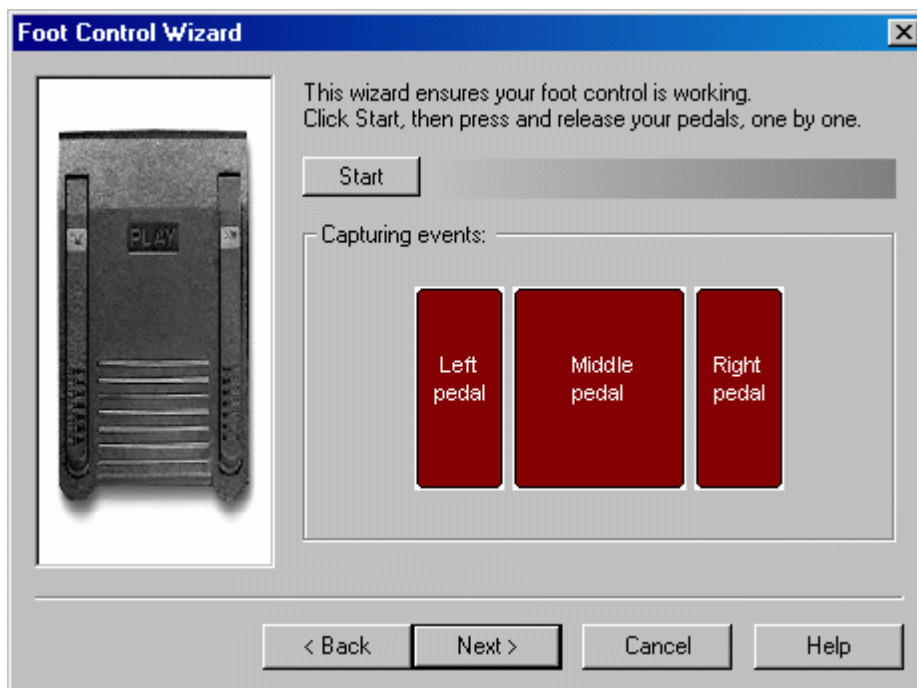
Before running the Foot Control Wizard, you should connect your foot control to your PC.

The Foot Control Wizard consists of the following pages:

- A Welcome page
- Choice of device
- Analysis and mapping of pedal movements
- Completion of Foot Pedal Wizard.

Analysis and mapping of pedal movements

The page looks like this:



To analyze and map the pedal movements, take the following steps:

1. Click the "Start" button to start the Foot Control Wizard.
2. Press and release the pedals of your device, as follows:
 - For a 2-pedal control: press the left pedal, release the left pedal, press the right pedal, release the right pedal.
 - For a 3-pedal control: press the left pedal, release the left pedal, press the middle pedal, release the middle pedal, press the right pedal, release the right pedal.
3. Click the "Stop" button to stop the Foot Control Wizard, if it has not stopped automatically after releasing the last pedal. A message appears indicating whether or not the wizard was able to successfully set map the pedal movements.

If the red indicators do not light up while you press the pedals, the Foot Pedal Wizard cannot map the pedal movements. This can be caused by the following:

- Your device is switched off, it is not connected, or it does not work properly.
- You have a non-standard device and the Foot Pedal Wizard was not able to detect the pedal movements.